



POWERHOUSE DISTRIBUTIONS

P.O Box 2100, Bedfordview, 2008, South Africa
Tel : +27 11 346 1812 Fax :+27 11 346 1818
e-mail : info@phdpowerhouse.co.za
Website : www.phdpowerhouse.co.za

Standby Diesel Generator Sets - 10kVA-2000kVA

FEATURES:

All units complete with exhaust systems, 12 hour fuel tanks (larger tanks available), batteries, **automatic mains failure control panels and prime power base load control panels**. The panels include standard metering switchgear, control gear and engine protection. Both single and three phase versions available.

APPLICATIONS:

- Agriculture
- Cold Rooms
- Banking
- Airports
- Building Services
- Hospitals
- Hotels and Entertainment
- Engineering

SPECIFICATIONS:

Engine Types	: Caterpillar, Cummins, Daimler Chrysler MTU, Detroit Diesel VM Sun, Deutz, Hatz, John Deere, Kirloskar, Lister, Lombardini, Perkins, Scania, Volvo and Yanmar
Alternator Types	: Leroy Somer, Marelli and Mecc Alte
Sizes	: Petrol powered up to 10KVA Single Phase; Diesel Powered from 10KVA to 2000KVA Three Phase
Voltage Ranges	: 110V-525V
Frequencies	: 50/60Hz
Engine Speeds	: 3000 or 1500 RPM
Generator Sets	: Available with Base Load and Automatic Mains Failure Control Panels mounted on open steel frame. Weatherproof Silent Canopy. Mobile Trailer mounted



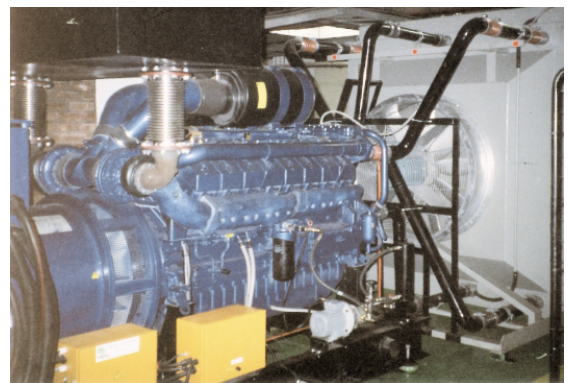
300KVA Automatic mains failure



100KVA, 25KVA, 13KVA remote start/stop and AMF



30KVA Automatic mains failure soundproof Generator Set. Standard soundproof canopy with sound levels of 65dB(A) at 7 metres in an open field.



1000KVA Automatic mains failure Generator Set. MTU 16V 2000 G62 / Leroy Somer (Installed at the Capital Alliance Building, Johannesburg)

All engines and alternators used in the manufacture of Power Generation Equipment conform to the following specifications:

ENGINES: B.S. 5514 1982; ISO 30461; 1DIN6271.

ALTERNATORS: B.S. 5000; VDE 30; IEC 23; UTE 5100; NEC 51-111; NEMA – IEEE CSA.

Where applicable alternators specified for Marine Applications will conform to:

BUREAU VERITAS; LLOYDS REGISTER; AMERICAN BUREAU OF SHIPPING; DNV; RINA; GERMANISHER LLOYDS; KOREAN REGISTER OF SHIPPING; NKK.